



# Civil Construction

## Expertise

Ability to handle complex projects



## Resources

Large-scale plant fleet and years of experience

## Management systems

Strong focus on safety and the environment

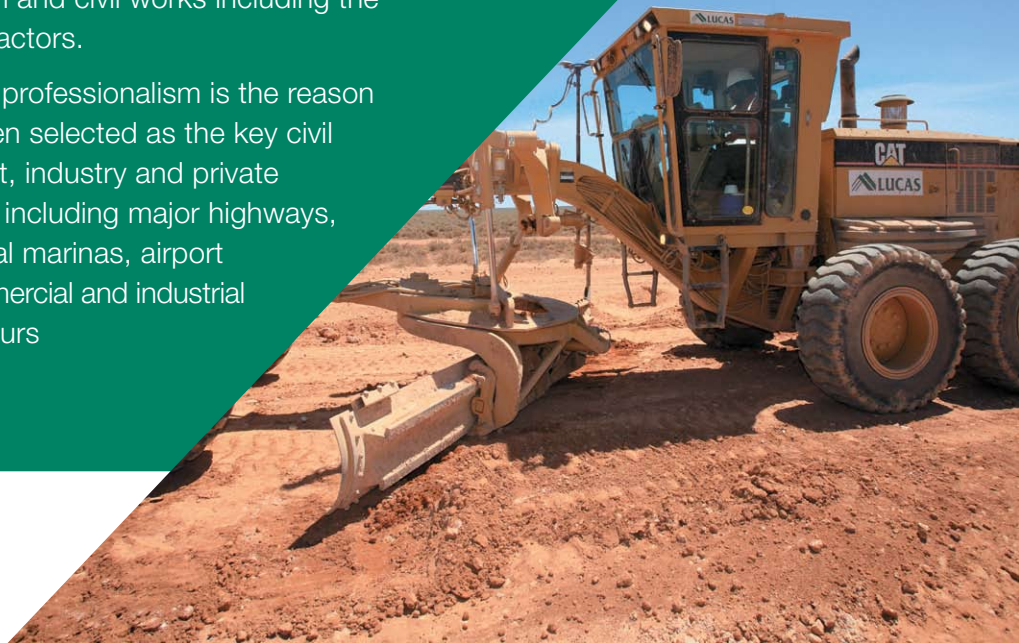


### Lucas Earthmovers has become the contractor of choice for many major civil construction projects.

Years of experience, substantial resources and equipment, and extensive in-house skills mean we have the capacity to tackle developments of any type and size and deliver on time and on budget.

We have developed rigorous management systems to cover all aspects of construction and civil works including the management of subcontractors.

This broad capability and professionalism is the reason Lucas Earthmovers is often selected as the key civil contractor for government, industry and private enterprise developments, including major highways, residential and commercial marinas, airport expansions, utilities, commercial and industrial developments, ferry harbours and breakwaters.



# Extensive in-house capability

In addition to broad technical knowledge in managing civil construction works, Lucas has extensive mechanical expertise.

Our diverse business and professional skills base has given us the capacity to undertake a significant amount of work in-house in areas such as material supply, steel fabrication and design.

When this is combined with our extensive fleet of plant and equipment it means we can tackle any project – no matter how complex or challenging – and consistently exceed client expectations in terms of quality and cost.

Lucas is able to value add to projects by providing construction solutions, engineering to meet desired budget outcomes and overcome technical or logistical challenges.

Equally important, our comprehensive Integrated Management System allows us to meet all the requirements of the Civil Construction Management Code. We consistently comply in the critical areas of quality assurance, health and safety, and regulatory and environmental requirements.

Our experience covers all types of civil construction and we have the ability to work in sensitive and remote environments. Our capabilities include:

- **Bulk earthworks**
- **Bridges**
- **Roads and highways (Department of Transport, Energy and Infrastructure R3 – B1 accredited)**
- **Concrete works**
- **Facilities engineering and construction**
- **Services and utilities**
- **Wetlands, process and environmental dams**
- **Commercial and Industrial Development**
- **Site remediation**

Lucas operates in many remote and regional locations and has a policy of hiring local employees to supplement our base workforce.

Lucas Earthmovers Pty Ltd  
Phone (08) 8179 4000  
Facsimile (08) 8358 3849  
PO Box 150 Brighton  
South Australia 5048

[www.lucasearthmovers.com.au](http://www.lucasearthmovers.com.au)

## Civil construction projects

**Cape Jaffa Anchorage** Breakwater construction, dredging, harbour excavation, harbour wharf and retaining walls, boat ramps, pipelines, landscaping, concrete construction, roads and services for a residential and commercial marina development.

**Common User Facility Air Warfare Destroyer Project** Excavation and dredging of shiplift facility.

**Highbury Landfill Capping** Rehabilitation and construction of synthetic clay liner to major landfill facility.

**Southern Expressway** All bulk earthworks, blasting, screening mound construction, environmental earthworks and wetland construction.

**Lucky Bay and Wallaroo Ferry** Ferry harbour, breakwaters, concrete loading bridges as well as piling and fabrication of the fender strut system.

**Harbourtown, Adelaide Airport** Bulk fill and earthworks, fire mains and common service trenches.

**Oz Minerals Prominent Hill** Topsoil stripping, airstrip, bulk earthworks, 140km of mine site access and concentrate haul roads, tailings storage facility and site works for the copper-gold mine, 650 km north-west of Adelaide.

**Termite Resources** Highway Underpass Construction.

**Big W, Monarto** 60,000 sq m building platform, services, car parks and access roads.

**Burbridge Business Park** Roadway construction, culvert crossings, stormwater drainage, 1km drainage channel and detention basin.

**Marina Hindmarsh Island** Bulk excavation, lagoon edging and roadway construction.

## About us

Lucas Earthmovers has been a leading provider of civil construction, earthmoving, and mining services to major industry and government departments across Australia for the past 40 years. Our specialist services cover all areas of civil construction, contract mining, quarrying and crushing, civil engineering, site remediation and waste management

With more than 200 highly qualified and experienced staff and one of the largest plant and equipment fleets in South Australia, no project is too large or challenging. Safety is a priority – we are accredited to ISO 18001 and Australian/New Zealand Standard 4801 for Occupational, Health and Safety Management Systems.

